

AFTERCARE INSTRUCTIONS

Though the solid surface countertops have a high quality sealing finish, chemical liquids such as nail polish must be avoided as they may stain the surface.

Excessive exposure to water will deteriorate the furniture. Wipe away any water splashes or condensation after use.

All bathrooms should be well ventilated. If necessary we recommend the installation of a suitable extractor fan.

Clean the countertop and furniture unit with a soft lightly damp cloth only.

CUSTOMER SERVICE

t: +44 208 686 5100

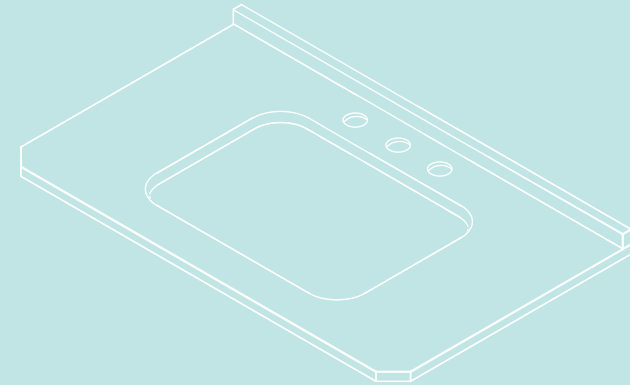
e: sales@saneux.com

Iain Stewart Centre, Gatwick,
Beehive Ring Road, RH6 0PB

www.saneux.com

SOLID SURFACE COUNTERTOPS

INSTALLATION INSTRUCTIONS



saneux

BEFORE YOU BEGIN

- Please read and understand these instructions carefully before you begin.
- These worktops were developed to make solid surface an easy fit option without the need for specialist templating or tooling. By following these instructions we know that competent installers can achieve excellent results.
- We would recommend for two people to install the countertops due to their weight and awkward shape. Manoeuvring the product and positioning it with two people will result in a better installation and reduce the risk of injury.
- The countertops should be stored horizontal and flat in a dry, well ventallated area prior to installation.

PRE-INSTALLATION CHECKS

- **It is essential that the furniture is level prior to the installation and then checked again once the worktop has been installed. The furniture should be levelled to a tolerance of no more than 3mm for every run of 3m. Use of a laser alignment device is recommended, however a spirit level would work well.**
- After the worktops are in position, please ensure all legs are on the floor so no movement can occur. Any surfaces to be silliconed must be clean and free of any dust.
- All surfaces should be checked for any damage and colour consistency prior to installation. If you are unsure of the colour consistency, sand a small patch of each of the adjoining boards to test this to ensure a satisfactory match before any installation is carried out. Ensure you are in a suitably lit environment, wipe the dust away and use a damp cloth to help get a true colour comparison.
- **Any claims after installation relating to inconsistency are not covered by the product warranty.**
- Darker colours show scratches and marks more easily and should be treated with extra care and attention during and after installation.
- Dust particles will be generated during the cutting, routing, sanding and drilling of the worktops. As a result of this, it is important to ensure the area you are working in is well ventilated and an appropriate dust extraction system is used. Our solid surface is completely non-toxic, however the adhesive used for joints contains methyl methacrylate and ventilation should be considered to ensure fumes are dissipated.

NOTES:

Warranty

Your worktops have a 10 year warranty against manufacturing defects. The additional 9 year warranty (1 year is statutory) should be registered no later than 90 days from the date of installation to validate any claims. In order to validate this warranty, the form on page 6 must be completed by the consumer, signed by the fitter and returned to Sylmar.

You can register your warranty online at www.minerva-warranty.co.uk.

It is imperative that the installation and care and maintenance instructions are referred to both before and after installation, as misuse of the work surface may affect the appearance of the product. This does not affect your statutory rights as a consumer.

The warranty applies to the first owner and first installation only and is not transferable.

Name

Address

..... Post Code

Tel

Email

Where did you purchase the work surface?

Product reference number.....

Date of purchase

Product reference number can be found on the packaging and on the underneath of the work surface.

To be completed by installer

I certify that this minerva work surface has been fitted in accordance with the prescribed installation instructions.

Signed.....

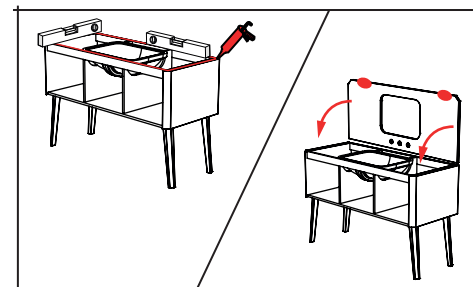
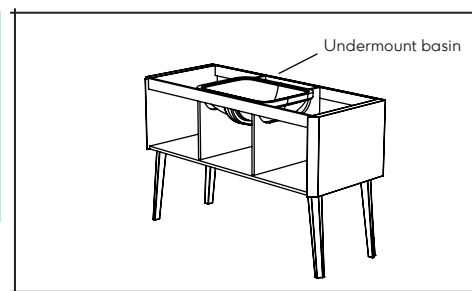
Date

Please print name

Please return to: Sylmar Technology Ltd, Azalea Close,
Clover Nook Industrial Park, Alfreton, Derbyshire DE55 4QX
Tel: 01773 521300 Fax: 01773 836837
E-mail: sales@sylmar.co.uk

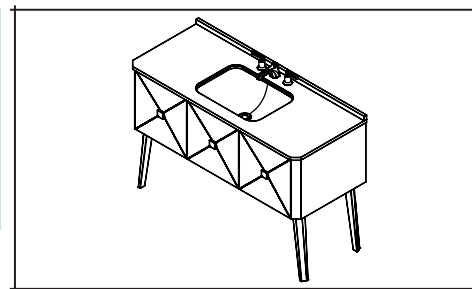
Or register warranty online at www.minervawarranty.co.uk
Data Protection: Sylmar Technology Limited may use your information for administration, customer analysis, customer service and targeted marketing. We may contact you by email, SMS, telephone, fax or other reasonable methods to let you know about other products, services or promotions that may be of interest to you. If you do not want to receive such information and offers then please tick

1.
For our under-mount basins, they will need to be located on the inside of the furniture prior to installing the countertop. Make sure you measure and prepare a support batten to hold the basin in place whilst the silicone cures.



2.
We recommend the use of a silicone adhesive of the same colour as the countertop. Make sure to apply a generous amount of silicone to all surfaces as shown in the diagram and remove any excess once the countertop has been fitted. Allow to cure for as long as indicated in the manufacturer's instructions.

3.
To secure the worktop to the base unit apply a 4-6mm bead of silicone sealant along the full run of the unit. As an approximate guide, 50% of the top edges of the furniture should be beaded with silicon. This will be sufficient to hold the worktop in place.



Our recommendations:

1. If drilling, specialist tools are not required. Standard drillbits and holesaws are suitable.
 2. If needing to make a cut out we would recommend that the work surface is placed on a solid substrate whilst machining. This will ensure the cut out does not drop and cause either injury or damage to the surface.
 3. When making a cutout it can sometimes be beneficial to fabricate your own Jig from mdf.
 4. When tiling down to the work surface leave a minimum of 3mm gap between the bottom row of tiles and the work surface. This gap should be sealed with a silicone sealant. Do not fill the gap with grout.
- **Before installation please thoroughly check your surfaces for damage and colour consistency.**

EDGE FINISHING

1. Cut the worksurface to length +5mm using a saw.
2. Trim to exact size using a router to ensure the edge is clean and straight.
3. Using a Random Orbital sander gently soften the top edge and surface with the P240, then using the P320 followed by the P500 grit and finally with the grey abrasive pad and a light mist of water to blend.

Care and Maintenance

Over a short period of time in use in the home, your worktops will develop a smoother finish and more lustrous appearance. In the first days after installation the dry finish of the surface may show finger marks more readily than it will do when it has achieved this 'patina'. Regular cleaning with warm soapy water is the usual.

It is possible to enhance the surface lustre by using Countertop Cleaner; as with any treatment of this nature, the application has to be repeated in order to maintain the same finish across all areas of the bathroom.

WHENEVER TRYING TO REMOVE MARKS OR SCRATCHES ALWAYS TRY THE LEAST SEVERE METHOD FIRST

1. Everyday marks - Using a mild abrasive cleaner such as Cif cream, work in a circular motion; wipe away all residue and buff dry. Apply countertop cleaner if applicable.
2. Fine scuffs and scratches - Cover the affected area with a liberal amount of soapy water. Use a firm sponge to ensure an even spread of pressure, rub over the affected area in a circular motion. A slight paste will be generated that aids the finishing process and helps to maintain the original level of surface finish. Repeat step 1. If marks are still evident, repeat the grey abrasive pad process or, in the case of deeper scratches, move on to step 3.
3. Removal of deeper scratches - Ensure that the surface is clean and dry before starting. Place a sanding disc onto a sanding block ensuring that it is located correctly and wrapped onto both sides of the block. Using small circular movements, work a small area around the affected part of the surface. A small amount of dust will be generated—this will need to be wiped off to check progress and before moving onto the next step. When the mark has been removed the repaired area will retain very fine sanding marks; these are removed by repeating step 2 and then step 1 to blend in the refurbished area. Each time you move back through the steps, work a slightly wider area so as to help this blend in.

Cleaning your solid surface

THINGS TO DO:

- To prevent damage from hot objects, always use heat resistant mats or trivets on the surface of the worktop.
- Wipe spilt liquids away.
- Wipe immediately with damp cloth. Dried on residues can be removed with a mild abrasive domestic cleaner. Rub gently, rinse and wipe dry.
- Cleaning with a sponge, water and mild detergent liquid is sufficient for normal maintenance.

THINGS TO AVOID:

- Do not place hot objects directly on the worktop.
- Avoid contact with aggressive chemical substances such as nail polish remover, chlorine, acetone, drain cleaner etc.
- Do not use very abrasive cleaners and solvents as cleaning agents.

Please note:

Darker colours show scratches and marks more easily and should be treated with extra care and attention during and after installation.