

AFTERCARE INSTRUCTIONS

Excessive exposure to water will deteriorate the furniture. Wipe away any water splashes or condensation after use. **Do not allow water to sit inside the drawers**

All bathrooms should be well ventilated. We recommend the installation of a suitable extractor fan.

Clean with a soft damp cloth only.

CUSTOMER SERVICE

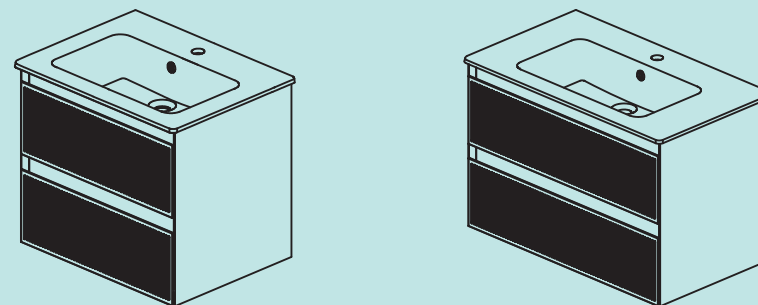
t: +44(0)208 686 5100
e: technical@saneux.com

Iain Stewart Centre, Beehive
Ring Road, Gatwick, RH6 0PB

www.saneux.com

MONUMENT

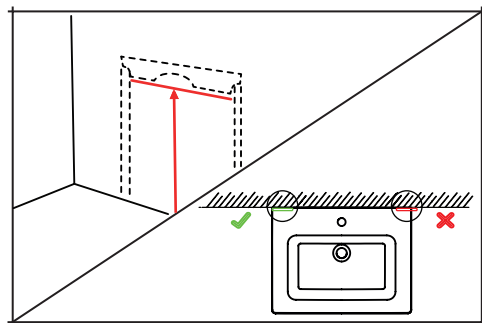
INSTALLATION INSTRUCTIONS



WALL MOUNTED FURNITURE

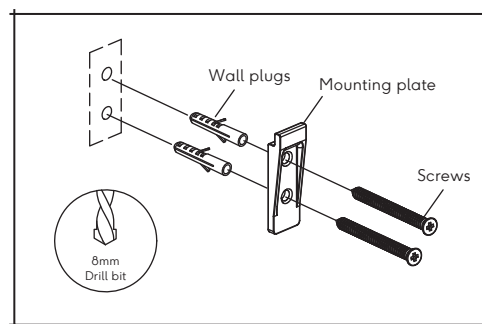
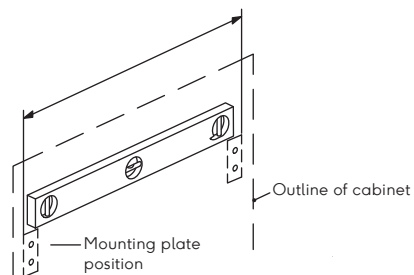
Portland Oak 60cm / 80cm

saneux



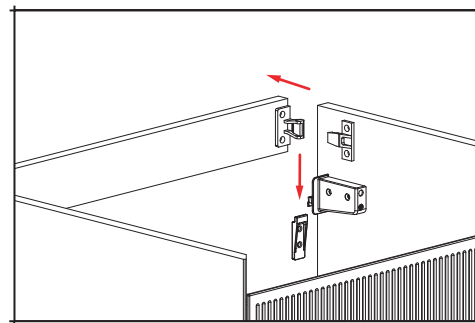
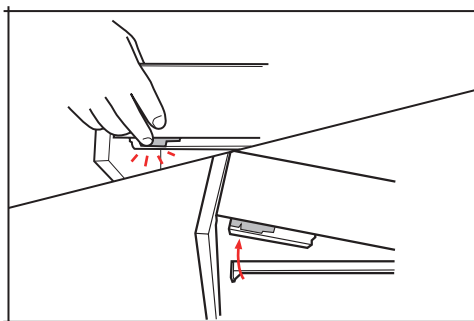
1.
The recommended height for the top face of the basin is 850mm.

2.
Mark the location of both mounting plates ensuring that they are positioned inside the side panels of the unit.



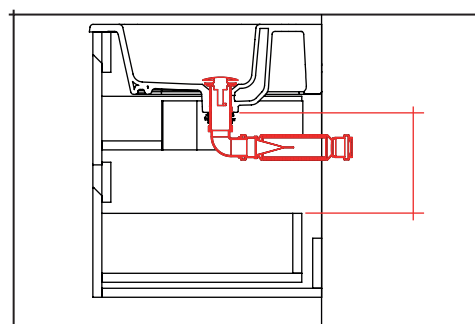
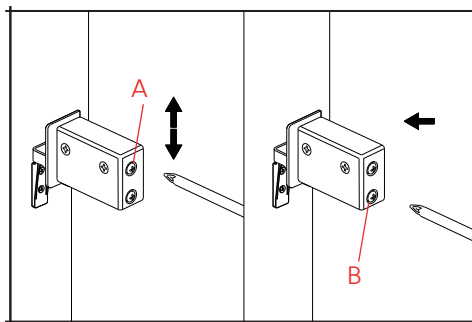
3.
Make sure that there are no hidden pipes or cables in the wall before drilling. Drill 2 holes per mounting plate using a suitable drill bit. The fixings supplied are for solid walls. For hollow or stud walls use specialist fixings. **Make sure to align accurately before securing.**

4.
It may be easier to install the unit if the drawer is removed. To remove the drawer from the unit, fully extend the drawer. Under either side of the drawer on the runners there are two clips that will release the drawer.



5.
Take off the back brace before the installation. Locate the fixing brackets onto the mounting plate and adjust to tighten to the wall.

6.
- Screw A adjusts the height of the unit
- Screw B tightens the unit against the wall.



7.
Make all plumbing connections and test for any leaks. We recommend the following saneux waste accessories:
WA005 - Low profile waste trap.
WX001 - Universal basin waste.
WA006 - Super low profile waste trap & click waste.

8.
Secure the basin to the unit using a silicone sealant.
IMPORTANT: Seal the edges between the basin/countertop and the furniture.

