

AFTERCARE INSTRUCTIONS

This product has a high quality, durable finish which in order to preserve, should be treated with care.

Clean with warm soapy water and a soft damp cloth only.

Cleaning products, including non-scratch ones could damage the chrome surface.

CUSTOMER SERVICE

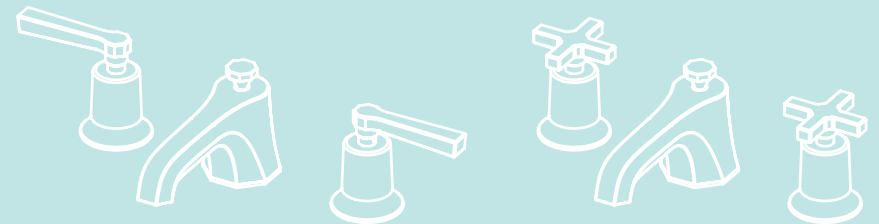
t: +44(0)208 686 5100
e: technical@saneux.com

4 Imperial Way
Croydon CR0 4RR

www.saneux.com

CROMWELL

INSTALLATION INSTRUCTIONS



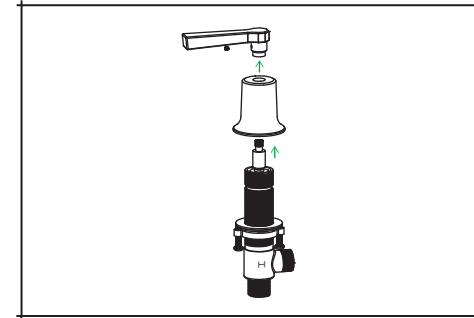
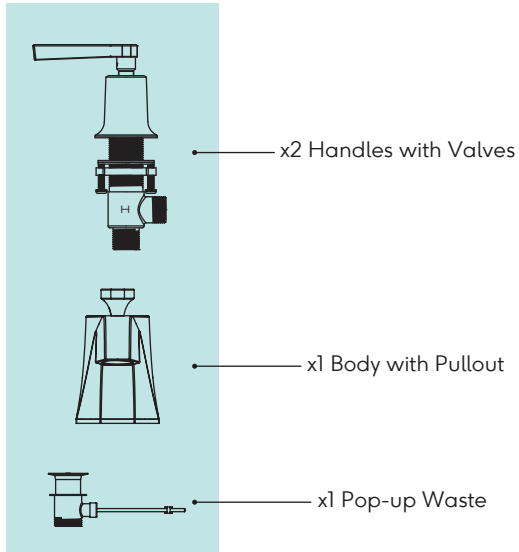
CRO03L, CRO03X

saneux

Be sure to flush the pipes of any possible debris before connecting the tap to the water supply as this could cause damage to the tap.

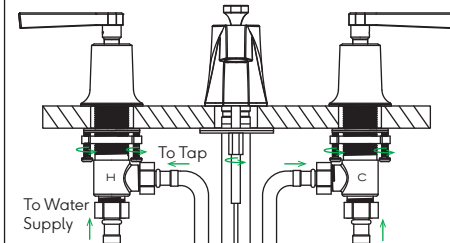
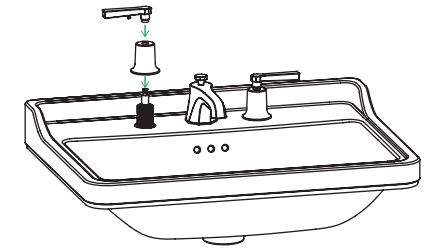
Ensure all components are present prior to installation.

COMPONENTS



Firstly, you must remove the handle from the valve. Loosen the grub screw on the grip of the handle and slide the grip off the valve. Then remove the small O-ring and unscrew the handle base from the valve.

Next, put the body and handles through the holes in to your chosen 3 hole basin. For the valves repeat step one in reverse making sure that the metal and rubber washers are on the underside of the basin.



Once the body and handles are in place, make sure to tighten the fixings on the valves and body to secure them to the basin. After the body and handles are fixed to the basin, the hoses can be attached to the valves and tap to the water supply. Be sure to connect the water supply to the bottom of the valve.

Be sure to fit the pop-up waste to the sink pull. There will be an extension to the sink pull that screws on, which will give enough length to reach the horizontal rod from the waste. Slide the sink pull into the plastic connector and secure in place by tightening the screw.

