

AFTERCARE INSTRUCTIONS

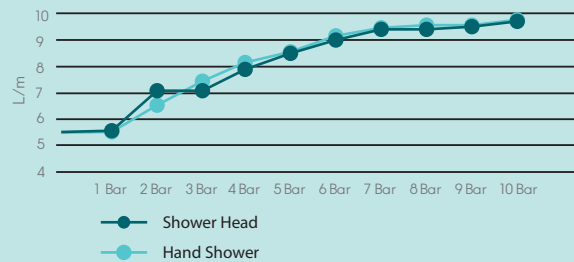
These products have a high quality, durable finish which in order to preserve, should be treated with care.

Clean with warm soapy water and a soft damp cloth only.

Cleaning products, including non-scratch ones could damage the finish.

Maintain your brassware by wiping dry after use, removing water drops and soap deposits

Water Flow Rate:



CUSTOMER SERVICE

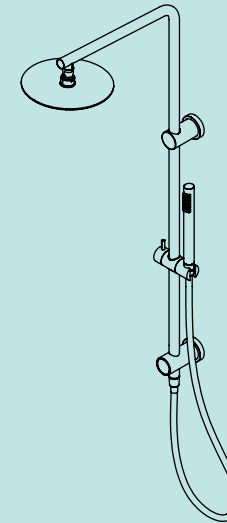
t: +44(0)208 686 5100
e: technical@saneux.com

Iain Stewart Centre, Beehive
Ring Road, Gatwick, RH6 0PB

www.saneux.com

COS

INSTALLATION INSTRUCTIONS



COSDP01

Rigid Risder Kit with Diverter & Integral
Outlet for use with Concealed Valves

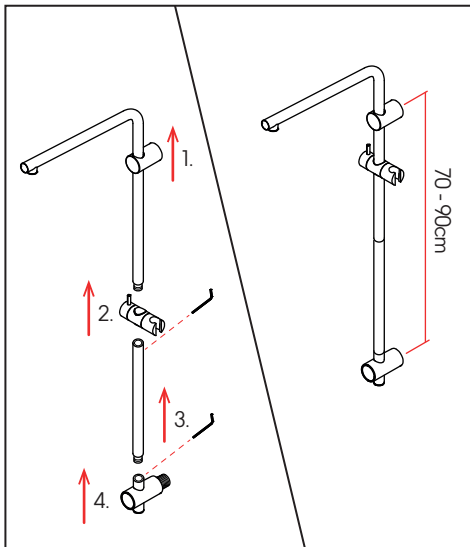
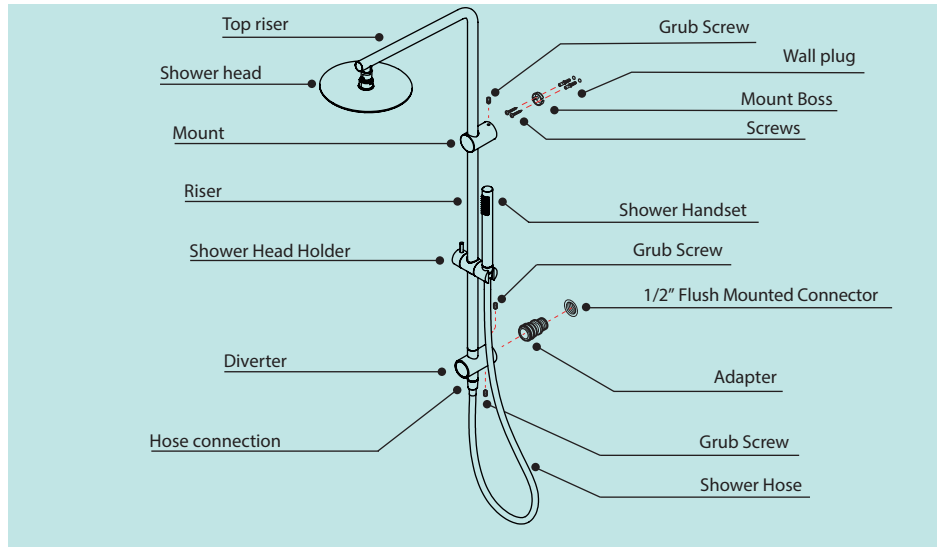
saneux

BEFORE YOU BEGIN

This product should only be fitted by a qualified plumber to NVQ level 3. Should the installation be completed by a non-qualified person then the guarantee may be considered invalid. Before installation ensure the water mains are off.

This product is to be installed in conjunction with Saneux concealed valves. Prior to starting installation, check below to ensure you have all the required components.

COMPONENTS

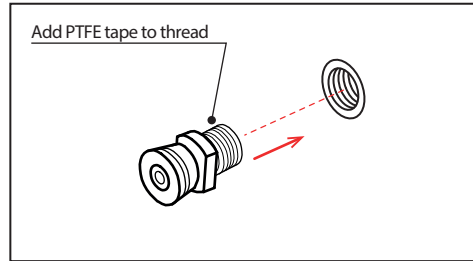
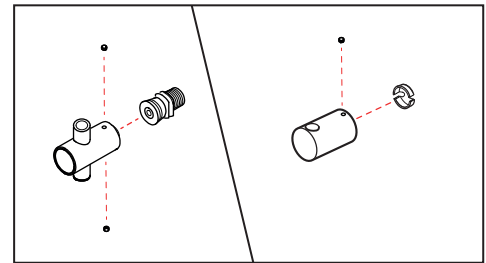


1. Slide the 'Mount' onto the 'Top riser'. Also slide the 'Shower handset holder' onto the 'Top riser'. Next, assemble the 'Top riser' to the 'Riser' using the grub screw. Finally assemble the 'Diverter' to the 'Riser' using the grub screw.

Then determine the distance desired between the 'Diverter fixing' and the 'Mounting Boss'.

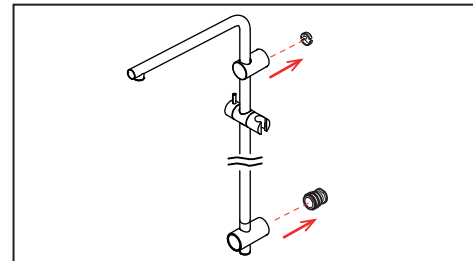
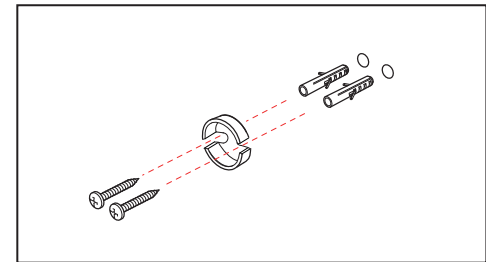
It is recommended that the distance between the 'Diverter' and the 'Mount' is between 70 & 90cm.

2. Remove the 'Adaptor' from the 'Diverter' By remove the 2 grub screws and slide out the 'Adaptor'.
Remove the 'Mount Boss' from the 'Mount' by remove the grub screw.



3. Prepare the wall for the 'Diverter' using a flush 1/2" connector, linked up to the concealed valve.
NOTE: Use PTFE tape to ensure a sealed system.

4. Drill and fit the 'Mount Boss' in place, ensure that it is aligned vertically with the 'Diverter Adaptor'.



5. Push the 'Mount' onto the 'Boss' and the 'Diverter' onto the 'Adaptor' and tighten the grub screws.

6. Fit the shower head. Then assemble the handset and shower hose. Make sure that there is a rubber washer in both ends of the hose.

