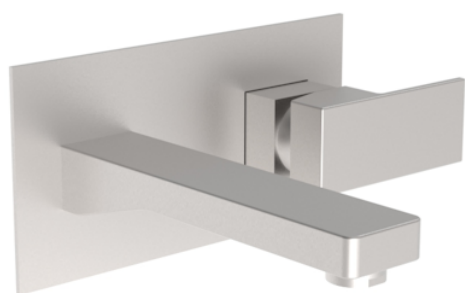


# TOOGA WALL MOUNTED BASIN MIXER - BRUSHED NICKEL



Product Code: TO205.BN

## PRODUCT INFORMATION

Width:	200mm
Finish:	Brushed Nickel (PVD)
Height:	103mm
Depth:	238mm
Material:	Brass
Product Type:	Wall Mounted Basin Mixer Tap
Approvals:	WRAS Approved
Weight	2.01kg
Waste	Not included, purchase separately
Guarantee	5 years
Spout Projection (mm)	180mm
Other Features	Pair with a 0 tap hole or countertop basin
Material	Brass
Approvals/Standards	WRAS

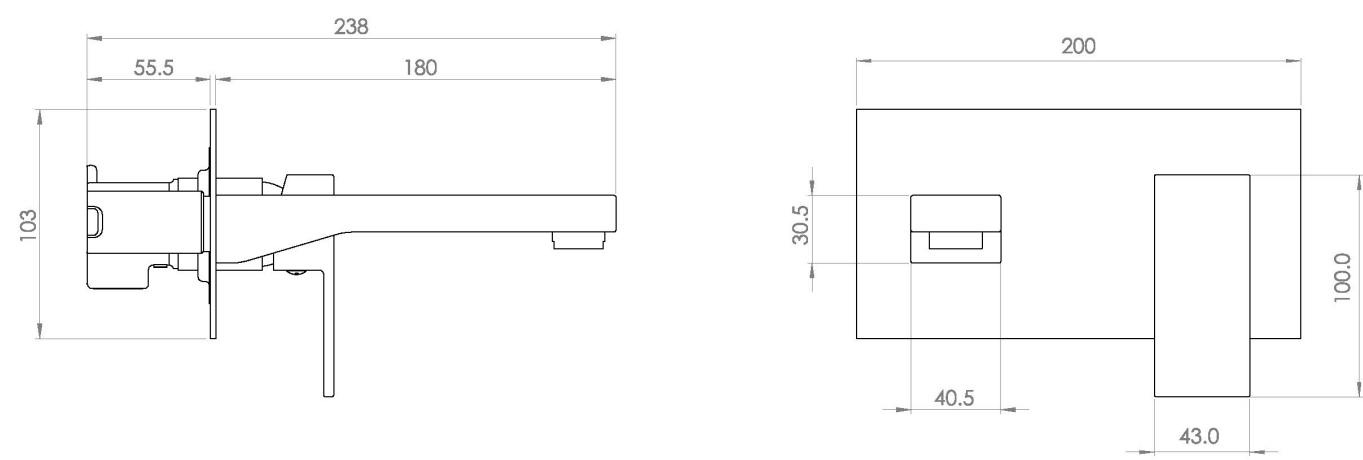
## DESCRIPTION

The TOOGA brassware collection features products that will be the focal point of any bathroom with its sharp, sleek lines.

This TOOGA wall mounted basin mixer in this stunning brushed nickel finish will instantly add a luxury touch to your bathroom, and with it having a PVD finish, it will continuously look flawless for years to come. Pair it with any of our no tap hole washbasins or our SIENNA countertop basins.

Waste to be purchased separately.

TECHNICAL DRAWING



FLOW RATE

- 0.2 Bar - Flowrate: 3.7 l/min
- 0.3 Bar - Flowrate: 4.4 l/min
- 0.4 Bar - Flowrate: 5 l/min
- 0.5 Bar - Flowrate: 5.5 l/min
- 1 Bar - Flowrate: 7.5 l/min
- 2 Bar - Flowrate: 10.5 l/min
- 3 Bar - Flowrate: 13 l/min
- 4 Bar - Flowrate: 15 l/min
- 5 Bar - Flowrate: 16.9 l/min

Saneux reserves the right to alter the specifications and product range without prior notice. Dimensions are given as a guide only. Dimensions should not be used for surrounding furniture, fixtures and fittings until the product is on site.

<https://saneux.com/products/tooga-wall-mounted-basin-mixer-brushed-nickel>