

## COS WALL MOUNTED 2 PLATE BASIN MIXER – BRUSHED NICKEL



**Product Code:** CO2052.BN

### PRODUCT INFORMATION

<b>Width:</b>	208.5mm
<b>Finish:</b>	Brushed Nickel (PVD)
<b>Height:</b>	80mm
<b>Depth:</b>	226.8mm
<b>Material:</b>	Brass
<b>Product Type:</b>	Wall Mounted Basin Mixer Tap
<b>Approvals:</b>	WRAS Approved
<b>Weight</b>	1.44kg
<b>Waste</b>	Not included, purchase separately
<b>Guarantee</b>	5 years
<b>Spout Projection (mm)</b>	169.8mm
<b>Other Features</b>	Pair with a 0 tap hole or countertop basin
<b>Material</b>	Brass
<b>Approvals/Standards</b>	WRAS

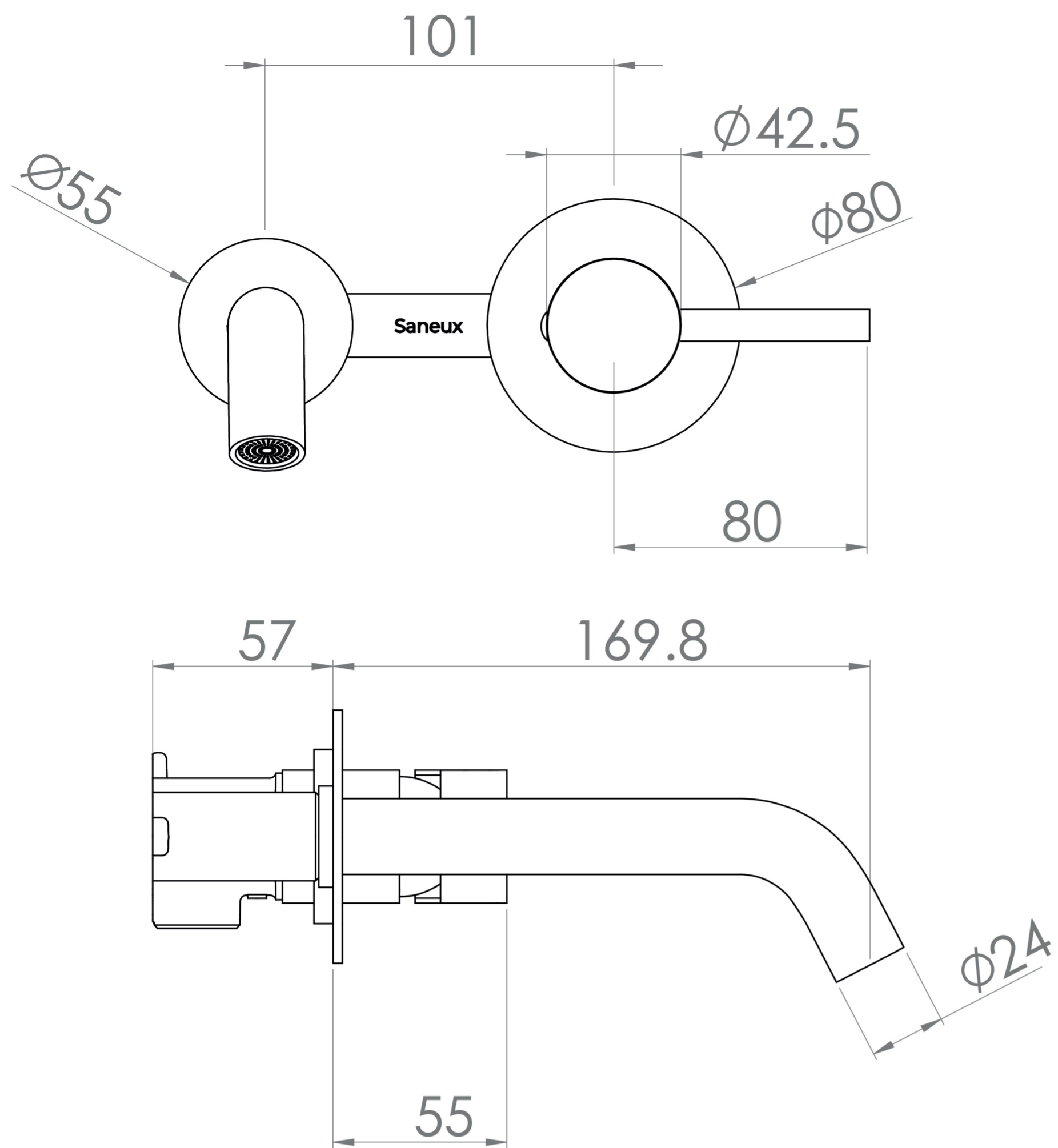
### DESCRIPTION

The COS collection was designed to create brassware that was both modern and classic to suit any style of bathroom.

This COS two plate wall mounted basin mixer in this stunning brushed nickel finish will instantly add a luxury touch to your bathroom, and with it having a PVD finish, it will continuously look flawless for years to come. Pair it with any of our no tap hole washbasins or our SIENNA countertop basins.

For a shorter spout option (95mm) - use: SP.COS.050

Waste to be purchased separately.



- 0.2 Bar - Flowrate: 3 l/min
- 0.3 Bar - Flowrate: 3.6 l/min
- 0.4 Bar - Flowrate: 4.2 l/min
- 0.5 Bar - Flowrate: 4.6 l/min
- 1 Bar - Flowrate: 6.4 l/min
- 2 Bar - Flowrate: 9.1 l/min
- 3 Bar - Flowrate: 11.2 l/min
- 4 Bar - Flowrate: 13.1 l/min
- 5 Bar - Flowrate: 14.7 l/min

Saneux reserves the right to alter the specifications and product range without prior notice. Dimensions are given as a guide only. Dimensions should not be used for surrounding furniture, fixtures and fittings until the product is on site.