

## COS WALL MOUNTED 2 PLATE BASIN MIXER WITH KNURLED HANDLE - CHROME



**Product Code:** CO2052.K

### PRODUCT INFORMATION

|                              |  |
|------------------------------|--|
| <b>Finish:</b>               | Chrome                                     |
| <b>Height:</b>               | 80mm                                       |
| <b>Width:</b>                | 208.5mm                                    |
| <b>Depth:</b>                | 226.8mm                                    |
| <b>Material</b>              | Brass                                      |
| <b>Weight</b>                | 1.44kg                                     |
| <b>Approvals/Standards</b>   | WRAS                                       |
| <b>Waste</b>                 | Not included, purchase separately          |
| <b>Guarantee</b>             | 5 years                                    |
| <b>Spout Projection (mm)</b> | 169.8mm                                    |
| <b>Other Features</b>        | Pair with a 0 tap hole or countertop basin |

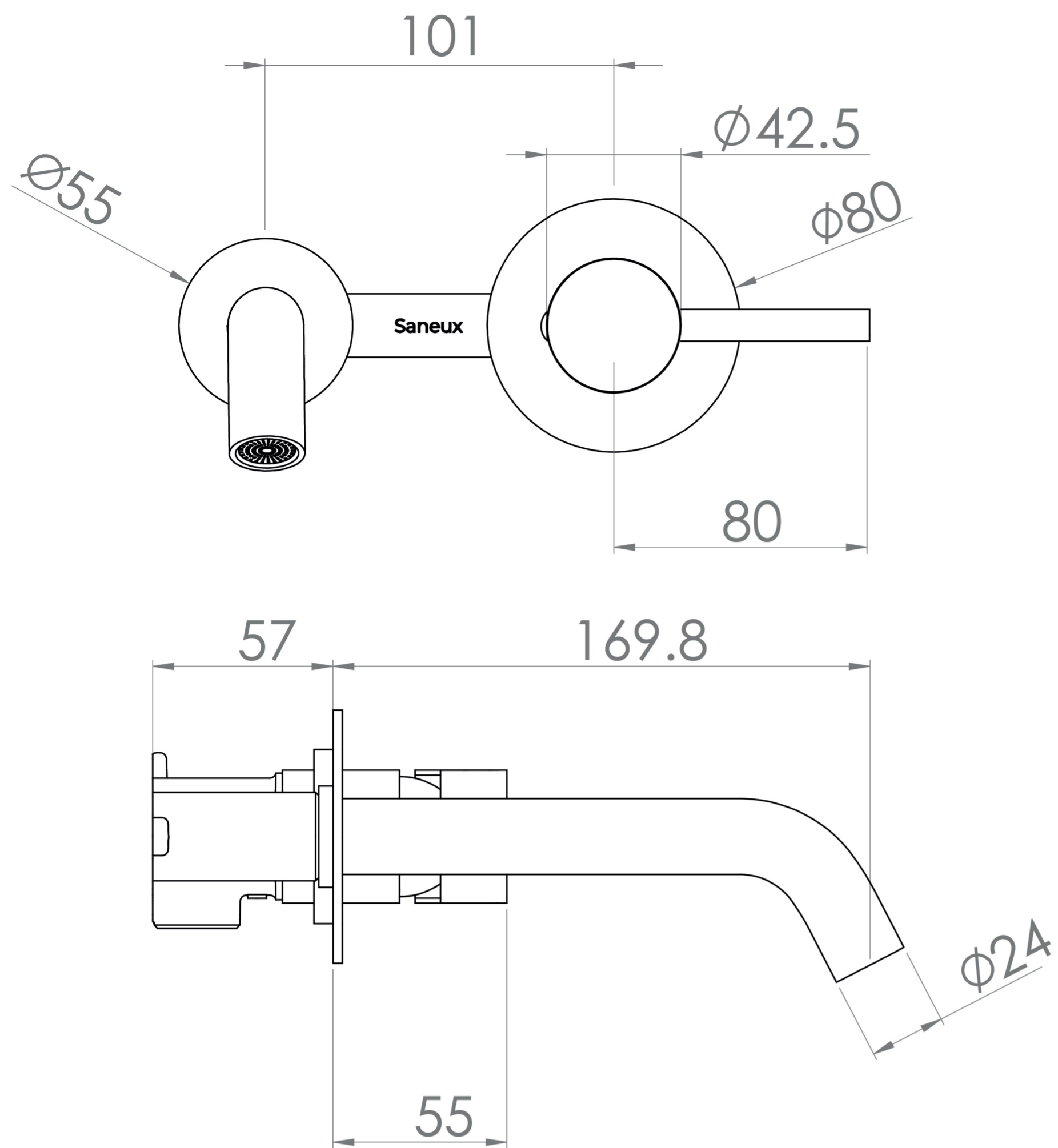
### DESCRIPTION

The COS collection was designed to create brassware that is both modern and classic to suit any style of bathroom.

Upgrade your basin mixer and opt for this COS 2 plate wall mounted basin mixer with an industrial style knurled handle. Pair it with any of our no tap hole washbasins or our SIENNA countertop basins.

For a shorter spout option (95mm) - use: SP.COS.046

Waste to be purchased separately.



- 0.2 Bar - Flowrate: 3 l/min
- 0.3 Bar - Flowrate: 3.6 l/min
- 0.4 Bar - Flowrate: 4.2 l/min
- 0.5 Bar - Flowrate: 4.6 l/min
- 1 Bar - Flowrate: 6.4 l/min
- 2 Bar - Flowrate: 9.1 l/min
- 3 Bar - Flowrate: 11.2 l/min
- 4 Bar - Flowrate: 13.1 l/min
- 5 Bar - Flowrate: 14.7 l/min

Saneux reserves the right to alter the specifications and product range without prior notice. Dimensions are given as a guide only. Dimensions should not be used for surrounding furniture, fixtures and fittings until the product is on site.