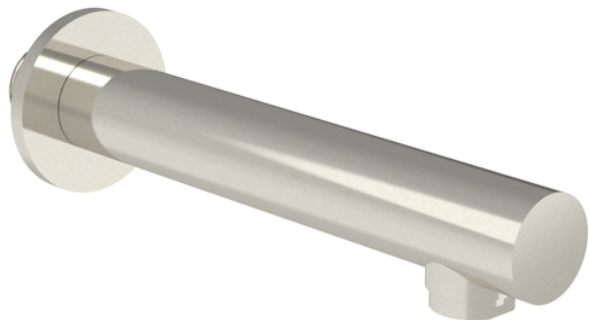


COS 220MM ROUND BATH SPOUT - BRUSHED NICKEL



Product Code: CO232.BN

PRODUCT INFORMATION

Finish:	Brushed Nickel (PVD)
Height:	50mm
Depth:	165mm
Material:	Brass
Product Type:	Bath Spout
Width:	50mm
Approvals:	WRAS Approved
Weight	0.3kg
Material	Brass

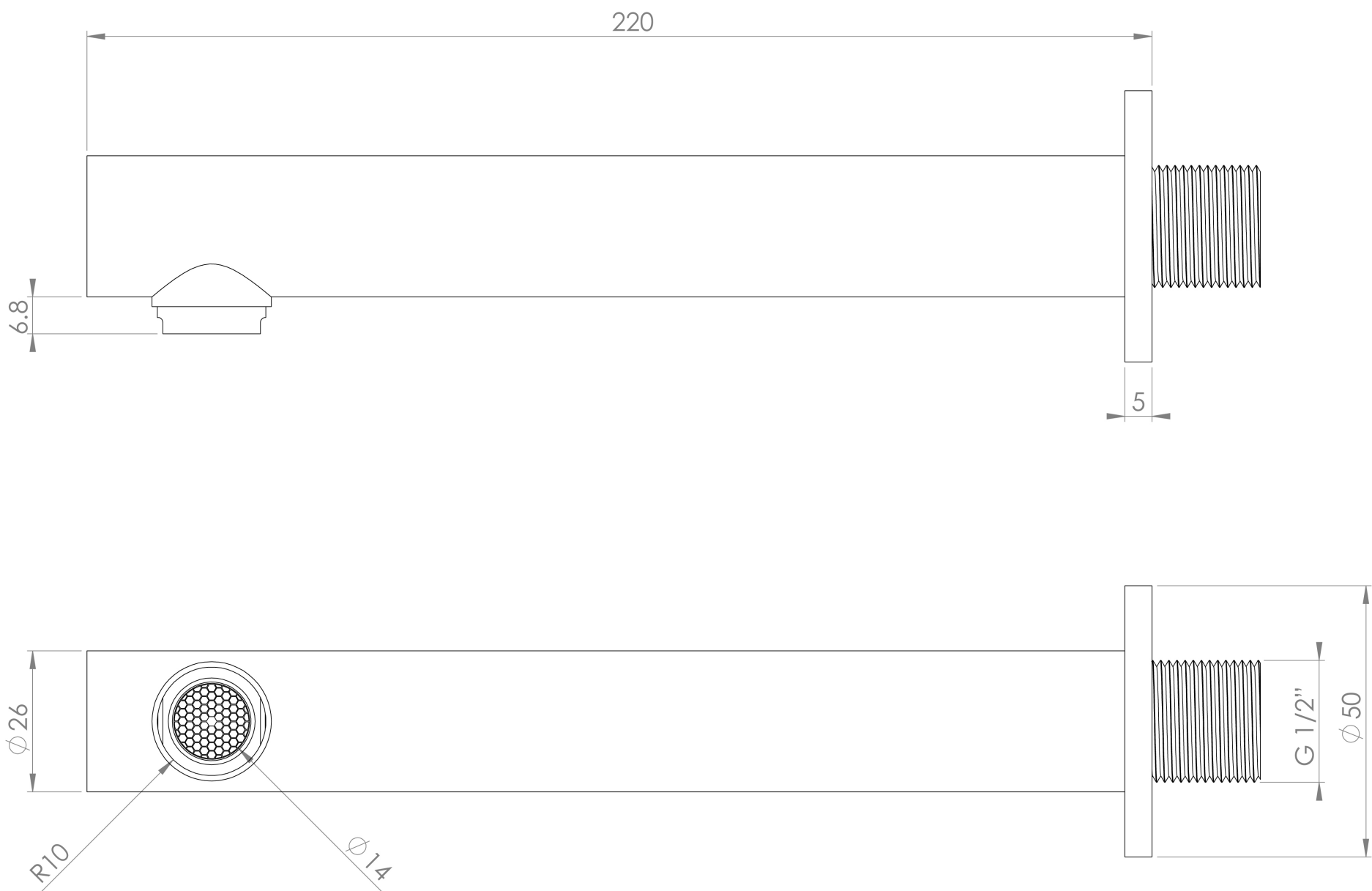
DESCRIPTION

The COS collection was designed to create brassware that was both modern and classic to suit any style of bathroom.

This COS bath spout in brushed nickel is wall mounted, creating a modern look to your bath set up. The brushed brass finish is in fact a PVD coating, which will help to make the brassware look flawless for years to come.

The bath spout can be paired with our built-in baths and free standing baths, and can be operated by one of our COS concealed thermostatic shower valves.

TECHNICAL DRAWING



FLOW RATE

- 0.5 Bar - Flowrate: 3.15 l/min
- 1 Bar - Flowrate: 4.21 l/min
- 2 Bar - Flowrate: 6.2 l/min
- 3 Bar - Flowrate: 8.2 l/min
- 4 Bar - Flowrate: 8.8 l/min
- 5 Bar - Flowrate: 9.8 l/min

Saneux reserves the right to alter the specifications and product range without prior notice. Dimensions are given as a guide only. Dimensions should not be used for surrounding furniture, fixtures and fittings until the product is on site.

<https://saneux.com/products/cos-220mm-round-bath-spout-brushed-nickel>