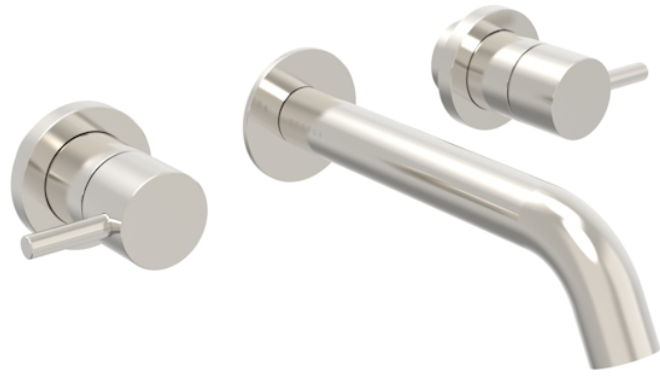


COS 3 PIECE WALL MOUNTED BASIN MIXER - BRUSHED NICKEL



Product Code: CO207.BN

PRODUCT INFORMATION

Finish:	Brushed Nickel (PVD)
Height:	27.5mm
Width:	298mm
Depth:	191mm
Material	Brass
Weight	3kg
Waste	Not included, purchase separately
Guarantee	5 years
Spout Projection (mm)	191mm
Other Features	Pair with a 0 tap hole or countertop basin

DESCRIPTION

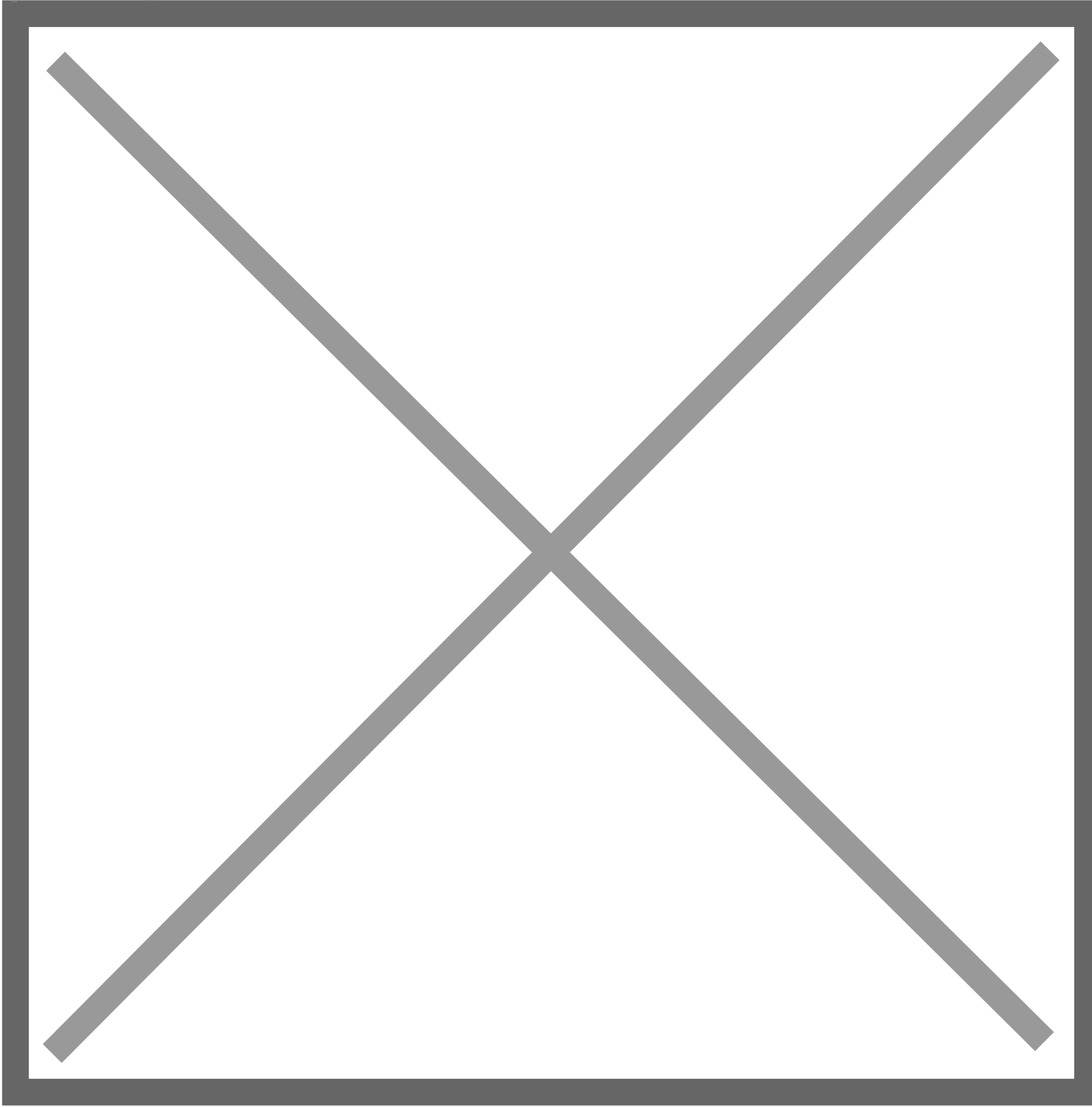
The COS collection was designed to create brassware that was both modern and classic to suit any style of bathroom.

This COS 3 piece wall mounted basin mixer in brushed nickel is a great option and will perfectly match any of our ceramic and furniture ranges.

Waste to be purchased separately.

TECHNICAL DRAWING

Image not found or type unknown



FLOW RATE

- 0.2 Bar - Flowrate: 3.6 l/min
- 0.3 Bar - Flowrate: 4.1 l/min
- 0.4 Bar - Flowrate: 4.8 l/min
- 0.5 Bar - Flowrate: 5.3 l/min
- 1 Bar - Flowrate: 7.5 l/min
- 2 Bar - Flowrate: 10.7 l/min
- 3 Bar - Flowrate: 13.2 l/min
- 4 Bar - Flowrate: 15.4 l/min
- 5 Bar - Flowrate: 17.3 l/min

Saneux reserves the right to alter the specifications and product range without prior notice. Dimensions are given as a guide only. Dimensions should not be used for surrounding furniture, fixtures and fittings until the product is on site.

<https://saneux.com/products/cos-3-piece-wall-mounted-basin-mixer-brushed-nickel>