

# AUSTEN 62X45CM WASHBASIN 1TH



Product Code: 50010

## PRODUCT INFORMATION

<b>Finish:</b>	Gloss White
<b>Height:</b>	170mm
<b>Width:</b>	620mm
<b>Depth:</b>	455mm
<b>Material</b>	Ceramic
<b>Weight</b>	12.44kg
<b>Overflow(s)</b>	Yes
<b>Overflow Position</b>	Centre
<b>Overflow Diameter</b>	20mm
<b>Compatible Overflows</b>	OC01, OC02, OC03
<b>Tap Holes</b>	1 Tap Hole
<b>Tap Hole Position</b>	Centre
<b>Extra Tap Hole Options</b>	2 tap holes
<b>Recommended Waste Required</b>	Slotted waste
<b>Furniture Required For Installation?</b>	Optional
<b>Guarantee</b>	Lifetime

## DESCRIPTION

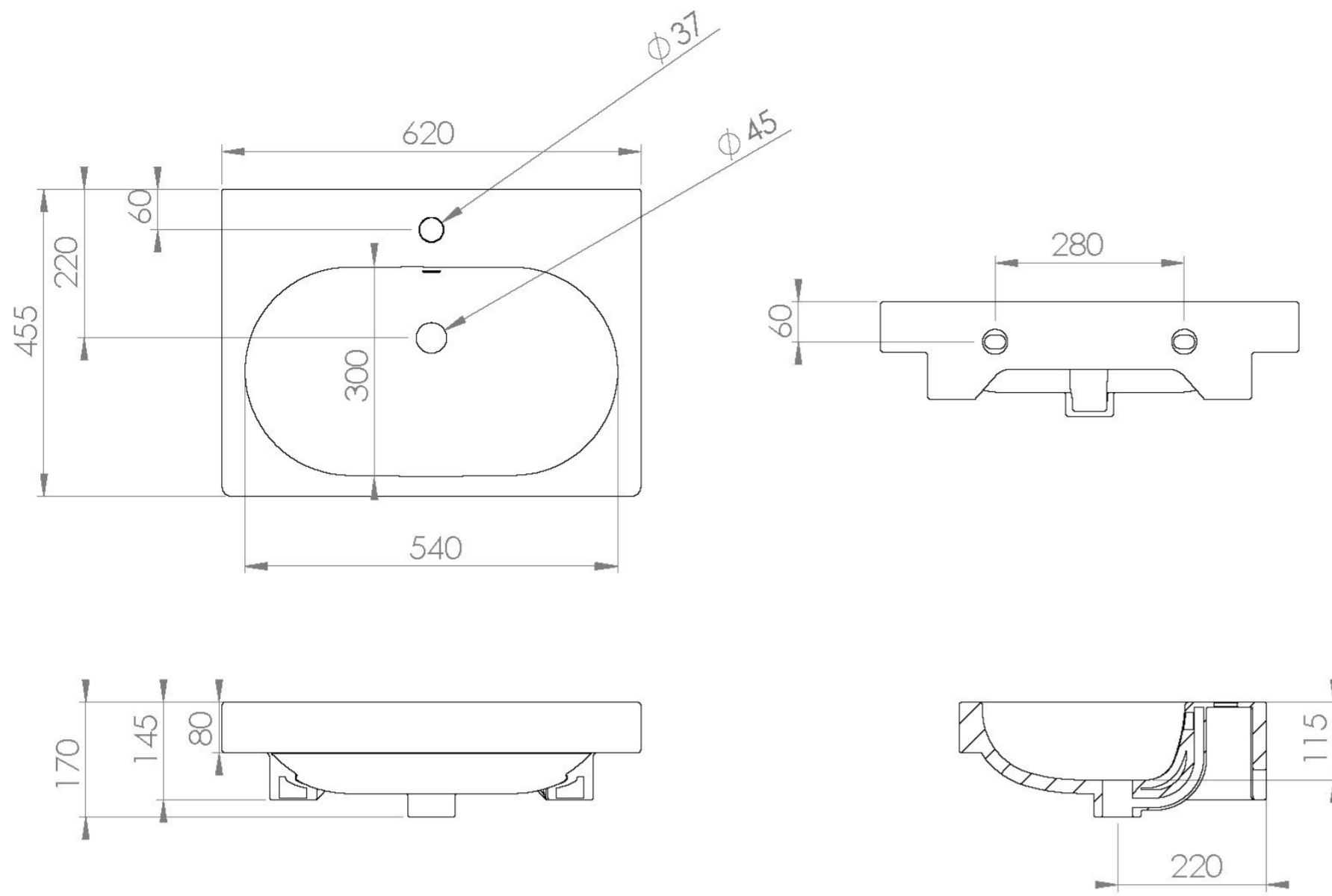
AUSTEN was designed to provide you with the best quality bathroom products that offer a luxurious yet classic style that will stand the test of time.

This AUSTEN 62x45cm 1 tap hole washbasin has a perfectly rounded deep bowl to prevent splashing as well as plenty of ledge space for displaying toiletries. It is also a modest projection of 45cm, so it can work in a variety of bathrooms.

Pair this washbasin with our AUSTEN 60cm wall mounted and floor standing vanity units.

\*With an overflow

# TECHNICAL DRAWING



Saneux reserves the right to alter the specifications and product range without prior notice. Dimensions are given as a guide only. Dimensions should not be used for surrounding furniture, fixtures and fittings until the product is on site.

<https://saneux.com/products/austen-62x45cm-washbasin-lth>