

## UNI 50X36CM WASHBASIN 1TH



Product Code: UN050B

---

 PRODUCT INFORMATION

|   |               |
|---|---------------|
| <b>Finish:</b>                              | Gloss White   |
| <b>Height:</b>                              | 169mm         |
| <b>Width:</b>                               | 500mm         |
| <b>Depth:</b>                               | 360mm         |
| <b>Material</b>                             | Ceramic       |
| <b>Weight</b>                               | 11kg          |
| <b>Overflow(s)</b>                          | Yes           |
| <b>Overflow Position</b>                    | Centre        |
| <b>Overflow Diameter</b>                    | 29mm          |
| <b>Tap Holes</b>                            | 1 Tap Hole    |
| <b>Tap Hole Position</b>                    | Centre        |
| <b>Extra Tap Hole Options</b>               | 2 tap holes   |
| <b>Recommended Waste Required</b>           | Slotted waste |
| <b>Furniture Required For Installation?</b> | Optional      |
| <b>Guarantee</b>                            | Lifetime      |

---

 DESCRIPTION

We've kept the UNI collection at a low profile - quite literally. It carries a vast range of slim profile basins with handle-less drawer units to help you to create a contemporary bathroom.

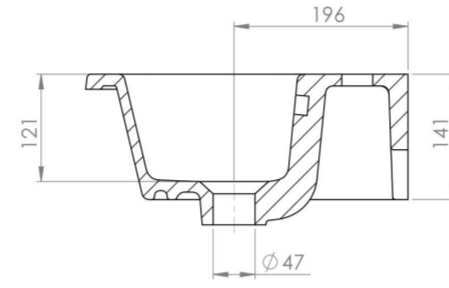
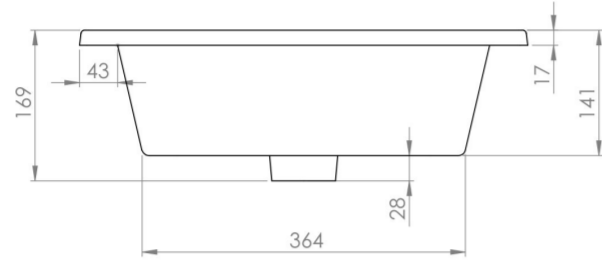
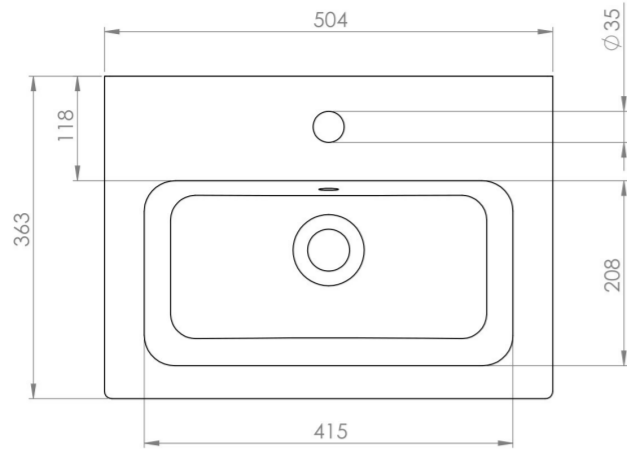
This UNI 50cm 1 tap hole washbasin is perfect for small & family sized bathrooms thanks to its short projection of 36cm and deep bowl to limit splashing.

Pair with one of our UNI, KINGSBURY, and MONUMENT 50cm units.

\*With an overflow

---

# TECHNICAL DRAWING



---

Saneux reserves the right to alter the specifications and product range without prior notice. Dimensions are given as a guide only. Dimensions should not be used for surrounding furniture, fixtures and fittings until the product is on site.

<https://saneux.com/products/uni-50x36cm-washbasin-lth>