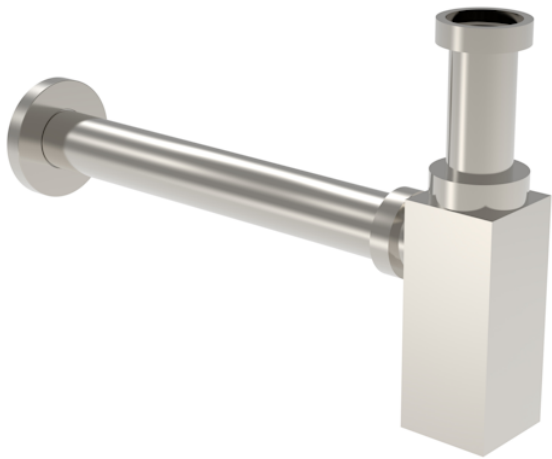


TOOGA SQUARE BOTTLE TRAP - BRUSHED NICKEL



Product Code: TO9570.BN

PRODUCT INFORMATION

Finish:	Brushed Nickel (PVD)
Height:	207mm
Width:	45mm
Depth:	400mm
Material	Brass
Weight	1.02kg
Guarantee	5 years standard, upgraded to 15 years if registered

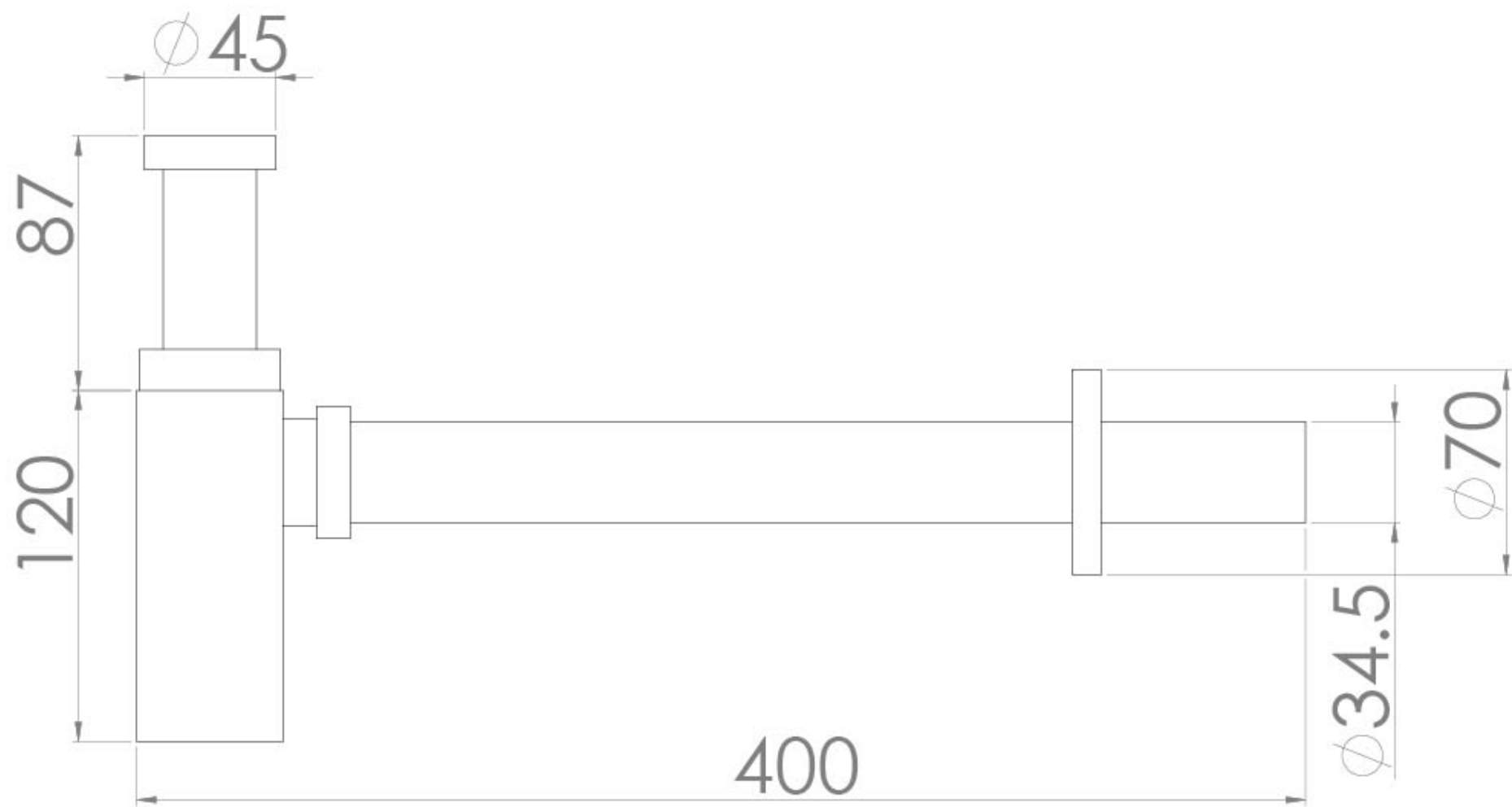
DESCRIPTION

The TOOGA brassware collection features products that will be the focal point of any bathroom with its sharp, sleek lines.

A TOOGA bottle trap in brushed nickel is the perfect finishing touch to your bathroom. If you're opting for a wall mounted washbasin on its own, a bottle trap will instantly give it a sophisticated look whilst still providing practicality. It can be cut down in height and in projection, so you can make sure it precisely connects with your basin and basin waste.

The brushed nickel finish is PVD, a durable coating to the finish that will continuously look flawless for years to come.

TECHNICAL DRAWING



Saneux reserves the right to alter the specifications and product range without prior notice. Dimensions are given as a guide only. Dimensions should not be used for surrounding furniture, fixtures and fittings until the product is on site.