

# AUSTEN 50X39CM WASHBASIN 1TH



Product Code: 50000

## PRODUCT INFORMATION

|                                      |                  |
|--------------------------------------|------------------|
| Finish:                              | Gloss White      |
| Height:                              | 142mm            |
| Width:                               | 500mm            |
| Depth:                               | 390mm            |
| Material                             | Ceramic          |
| Weight                               | 12.44kg          |
| Overflow(s)                          | Yes              |
| Overflow Position                    | Centre           |
| Overflow Diameter                    | 20mm             |
| Compatible Overflows                 | OC01, OC02, OC03 |
| Tap Holes                            | 1 Tap Hole       |
| Tap Hole Position                    | Centre           |
| Extra Tap Hole Options               | 2 tap holes      |
| Recommended Waste Required           | Slotted waste    |
| Furniture Required For Installation? | Optional         |
| Guarantee                            | Lifetime         |

## DESCRIPTION

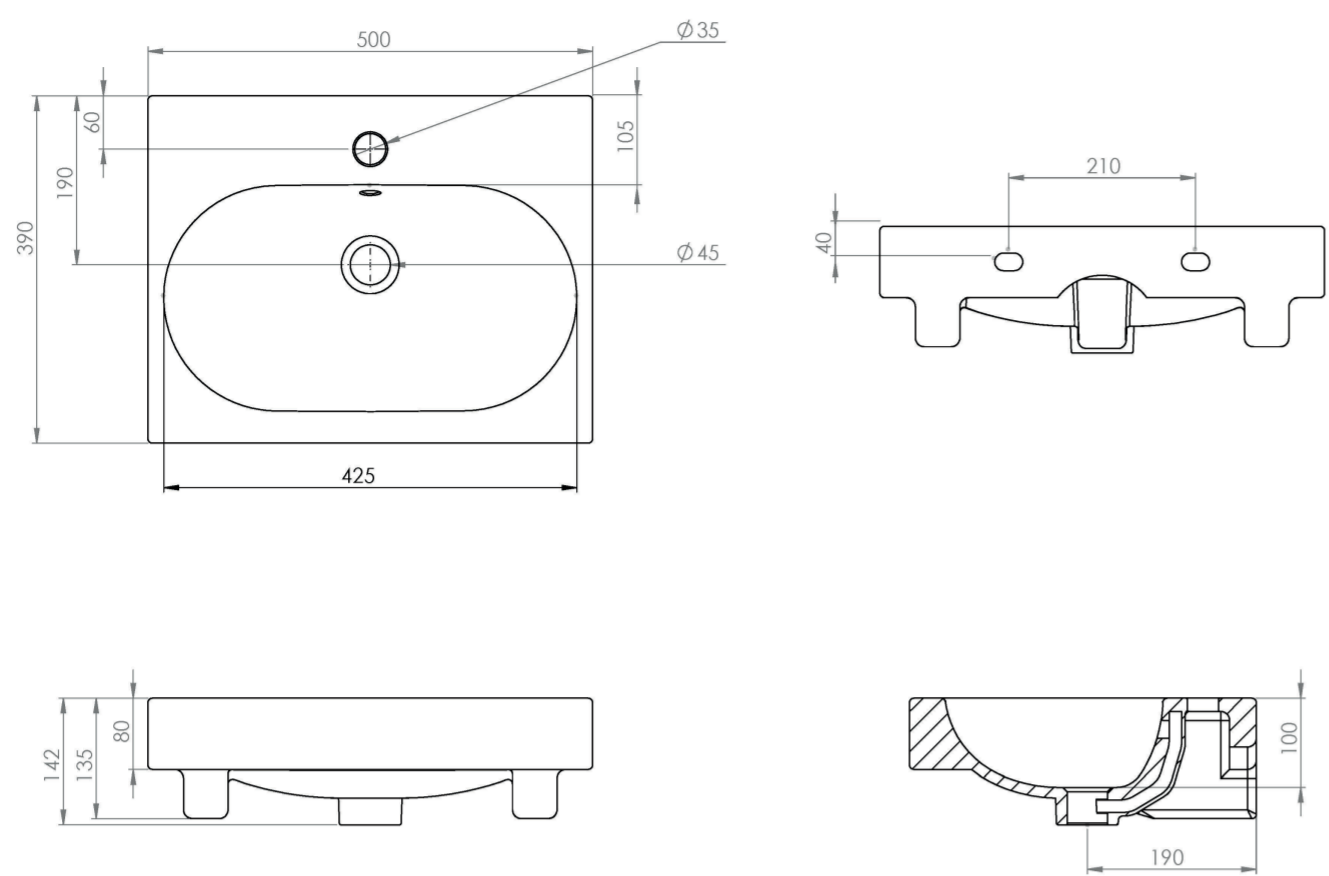
AUSTEN was designed to provide you with the best quality bathroom products that offer a luxurious yet classic style that will stand the test of time.

This AUSTEN 50x39cm 1 tap hole washbasin has a perfectly rounded deep bowl to prevent splashing as well as plenty of ledge space for displaying toiletries. It is also a modest projection of 39cm, so it can work in a variety of bathrooms both large and small.

Pair this washbasin with our AUSTEN 50cm wall mounted and floor standing vanity units.

\*With an overflow

TECHNICAL DRAWING



Saneux reserves the right to alter the specifications and product range without prior notice. Dimensions are given as a guide only. Dimensions should not be used for surrounding furniture, fixtures and fittings until the product is on site.

<https://saneux.com/products/austen-50x39cm-washbasin-1th>